
GENERAL DESCRIPTION

Condensing unit and reversible aircooled condensing units, with axial fans for outdoor installation.

Structure

With supporting frame, in peraluman and galvanized sheet. Stainless-steel screws.

Compressor

Rotary 1-phase (15÷25), 1-phase Scroll ermetic compressor (31-41) and 3-phase Scroll ermetic compressor (51÷131), complete with overload protection (klixon) embedded in the motor and crankcase, if needed, installed on rubber vibrations absorbing.

Fans

Axial fan type low ventilation and special wing profile, they are directly coupled to external rotor motors with protection grade IP54, and a safety fan guard fitted on discharge air flow.

Condenser

Copper tubes and aluminium finned coil.

Electrical panel

Includes: main switch with door lock device, fuses, compressor remote control switch and electronic card for the control of the main functions of the unit.

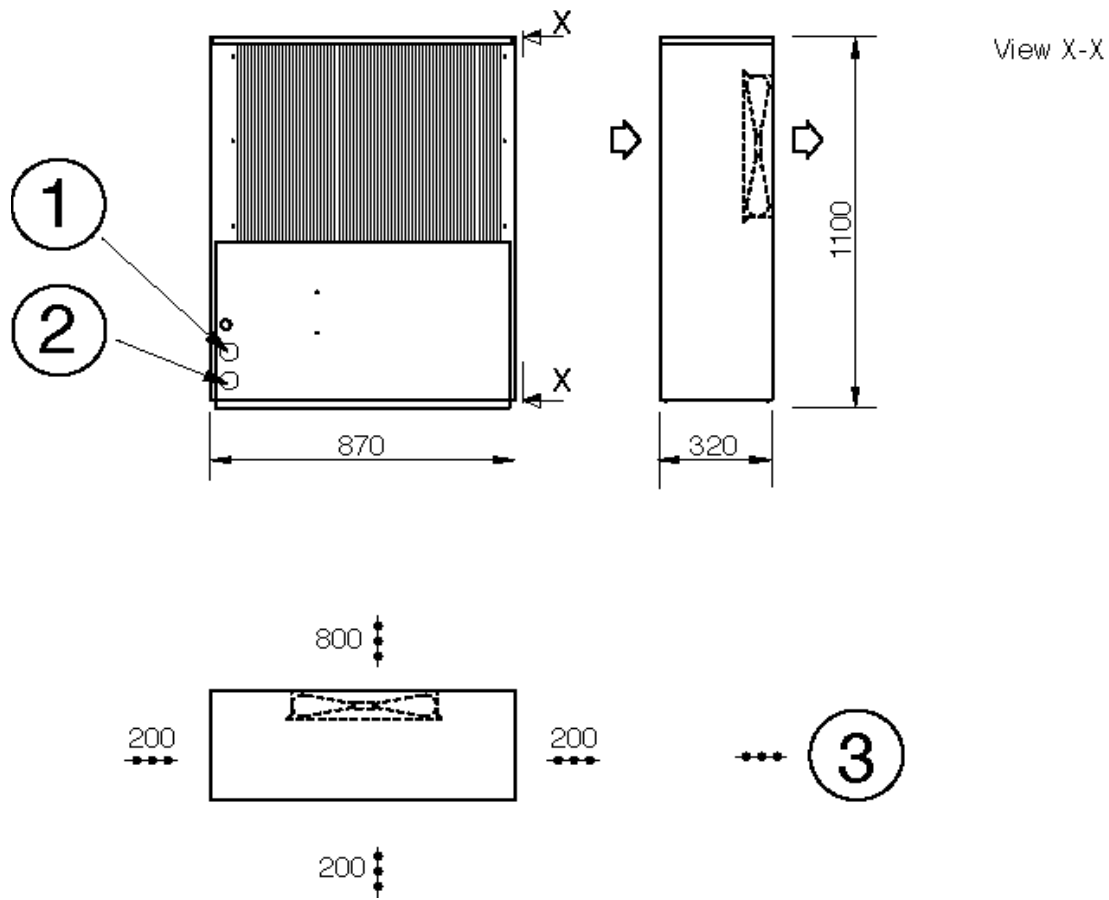
Refrigerant circuit

The circuit, in copper tubing, includes: manual reset high pressure switch and automatic reset low pressure switch, automatic reset low pressure switch and flare connections with valve (15÷81) or connections to be brazed (91÷151).

MHA/K 15
Condensing units with axial fans



OFFER: 0		POSITION: 0		QUANTITY: 1	
GENERAL INFORMATION				Summer	Winter
Cooling capacity	kW	4,8			
Heating capacity	kW				
Power input compressors	kW	1,2			
Refrigerant	Type	R410A			
Compressors	Type	Rotary			
Compressors / Refrigerant circuits	n°	1 / 1			
Capacity steps	%	0-100			
Refrigerant charge	kg				
ESEER					
IPLV					
ELECTRICAL DATA					
Power input unit	kW	1,4			
Input current unit	A	6,0			
Max input current unit	A	6,8			
Inrush current unit	A	37,0			
Supply voltage (power)	V/Hz/Ph	230/50/1			
Supply voltage (auxiliary)	V/Hz/Ph	230-24/50/1			
SOUND PRESSURE					
Sound pressure level at 1 m from the unit (ISO 3744)	dB(A)	49			
FAN SECTION (PRIMARY)					
Condenser	Type	Finned coils			
Fans	n°	1			
Ambient air temperature	°C	32,0			
Air flow	m³/s	0,86			
Usable static pressure	Pa				
Power input	kW	0,1			
Current input	A	0,7			
Evaporating temperature	°C	5,0			
DIMENSIONS AND WEIGHT					
Length x Width x Height	mm	870x320x1100			
Transport weight / Operating weight	kg	81 /			



- 1) Suction line
- 2) Liquid line
- 3) Clearance area